



VMP Motor - Head Performance						
Head Specifications					VMP TURBO	
Diameter inches	Length inches	Weight pounds	Unbalance lb-in	Ave Amp (Peak-to-Peak)	Speed⁴ rpm	Force pounds
7/8	11.94	1.4	0.029	0.041	13,000	139
1	12.45	2.1	0.029	0.028	13,000	139
1 1/4	12.19	3.0	0.092	0.062	12,500	408
1 1/2	12.04	4.1	0.162	0.079	12,500	719
1 3/4	13.05	6.2	0.236	0.077	12,000	965
2 1/8	13.01	9.2	0.337	0.073	12,000	1,378
2 1/2	12.52	12.2	0.478	0.078	12,000	1,955
Special Purpose Heads						
7/8 Low Force	9.94	1.2	0.012	0.021	13,500	62
2 1/8 Shallow Pour	5.84	3.3	0.168	0.102	12,800	782
Unshaded	Best Performance.					
Shaded	Reduced Performance because speed is too high or too low. A 10% increase in speed reduces the head bearing life by 50%.					
<p>¹ The speed provided above is an approximation of the head speed in concrete for the specified motor-head combination. The actual speed will vary depending on temperature, consistency of the concrete, the degree of brush wear, the hours on the bearings, etc. Running an electric motor with too large a head will slow the motor and can result in excess amp draw and heat generation with premature motor failure."</p>						
<p>⁴ The speed provided above is an approximation of the head speed in concrete with the VMP TURBO Pneumatic Power Unit with the control valve set for the appropriate head size. The actual speed will vary depending on temperature, consistency of the concrete the hours on the bearings, etc.</p>						



Performance Data for Viber® VMP Power Units

Model	Type	Weight pounds	HP	AMP / HP Rating	Quick Disconnect	Maximum Head Size inches
VMP TURBO - Handle	Pneumatic	14.9	2.0	2.2 hp	Yes	2 ½
VMP TURBO - Cage	Pneumatic	17.7	2.0	2.2 hp	Yes	2 ½

VIBER[®] Smart Parts[™] System Selection Guide

Application	Slump	Space Limitations	Head Diameter	Radius of Action	Power Units	Flexible Drive Length (Feet)								
						3	5	7	10	14	20	28*	35*	
													28*	35*
Block Walls & Small Diameter Fills: Plastic and flowing concrete for very thin members & walls & confined places.	> 3"	2.5" x 2.5"	7/8" VH 14	5"	VME 1500	X	X	X	X	X	X	X	Not Recommended	
					VME 2500*	X	X	X	X	X	X	X	X	X
					VMP 2000	X	X	X	X	X	X	X	X	X
					VMG-1500HH	X	X	X	X	X	X	X	Not Recommended	
					VMG 2500BP	7' or longer recommended			X	X	X	X	X	X
Thinnest Prestressed Sections Plastic and flowing concrete for very thin members & walls & confined places.	>3"	3" x 3"	1" VH 16	5"	VME 1500	X	X	X	X	X	X	X	Not Recommended	
					VME 2500*	X	X	X	X	X	X	X	X	
					VMP 2000	X	X	X	X	X	X	X	X	
					VMG-1500HH	X	X	X	X	X	X	Not Recommended		
					VMG 2500BP	7' or longer recommended			X	X	X	X	X	
Thin Prestressed Sections Plastic concrete in thin walls, columns, beams, pre-cast piles, thin slabs, and along construction joints	3 - 5"	3.25" x 3.25"	1-1/4" VH 20	7"	VME 1500	X	X	X	X	X	X	X	Not Recommended	
					VME 2500	X	X	X	X	X	X	X	X	
					VMP 2000	X	X	X	X	X	X	X	X	
					VMG-1500HH	X	X	X	X	X	X	Not Recommended		
					VMG 2500BP	7' or longer recommended								
Thin Wall Sections & General Use Plastic concrete in thin walls, columns, beams, precast piles, thin slabs, and along construction joints.	3 - 5"	3.5" x 3.5"	1-1/2" VH 24	13"	VME 1500	X	X	X	X	X	X	X	Not Recommended	
					VME 2500	X	X	X	X	X	X	X	X	
					VMP 2000	X	X	X	X	X	X	X	X	
					VMG-1500HH	X	X	X	X	X	X	Not Recommended		
					VMG 2500BP	7' or longer recommended			X	X	X	X	X	
General Use Plastic & stiff plastic concrete in general construction such as walls, columns, beams, pre-stressed piles, and heavy slabs.	2 - 4"	3.75" x 3.75"	1-3/4" VH 28	17"	VME 1500	X	X	X	X	X	X	X	Not Recommended	
					VME 2500	X	X	X	X	X	X	X	X	
					VME 3000L	X	X	X	X	X	X	X	X	
					VMP 2000	X	X	X	X	X	X	X	X	
					VMG-1500HH	X	X	X	X	X	X	Not Recommended		
VMG 2500BP	7' or longer recommended			X	X	X	X	X						
Stiff Low-Slump Concrete Stiff plastic concrete in general construction such as walls, columns, beams, pre-stressed piles, and heavy slabs.	1 - 3"	4" x 4"	2-1/8" VH 34	21"	VME 2500	X	X	X	X	X	X	X	Not Recommended	
					VME 3000L	X	X	X	X	X	X	X	X	
					VMP 2000	X	X	X	X	X	X	X	X	
					VMG 2500BP	7' or longer recommended			X	X	X	X	X	
Stiffest Low-Slump Concrete Mass and structural concrete deposited in relatively open forms.	< 2"	5" x 5"	2-1/2" VH 40	24"	VME 2500	X	X	X	X	X	X	X	Not Recommended	
					VME 3000L	X	X	X	X	X	X	X	X	
					VMP 2000	X	X	X	X	X	X	X	X	
					VMG 2500BP	7' or longer recommended			X	X	X	X	X	
Shallow Pours Plastic & stiff plastic concrete in slabs and other shallow pours less than 12" thick.	2-4"	4" x 4"	2-1/8" VH 34-SP	13"	VME 1500	X	X	X	X	X	X	X	Not Recommended	
					VME 2500	X	X	X	X	X	X	X	X	
					VMP 2000	X	X	X	X	X	X	X	X	
					VMG-1500HH	X	X	X	X	X	X	Not Recommended		
					VMG 2500BP	7' or longer recommended			X	X	X	X	X	
ICF Applications: Plastic and flowing concrete for very thin members & walls & confined places where insulated concrete forms are used	> 4"	2.5" x 2.5"	7/8" VH 14-LF	4"	VME 1500	X	X	X	X	X	X	X	Not Recommended	
					VME 2500	X	X	X	X	X	X	X	X	
					VMP 2000	X	X	X	X	X	X	X	X	
					VMG-1500HH	X	X	X	X	X	X	Not Recommended		
					VMG 2500BP	7' or longer recommended			X	X	X	X	X	

Find description in column 1 that matches the desired application.

2 Use column 2 to adjust for any size restrictions due to reinforcements, such as rebar, or other limiting structures.

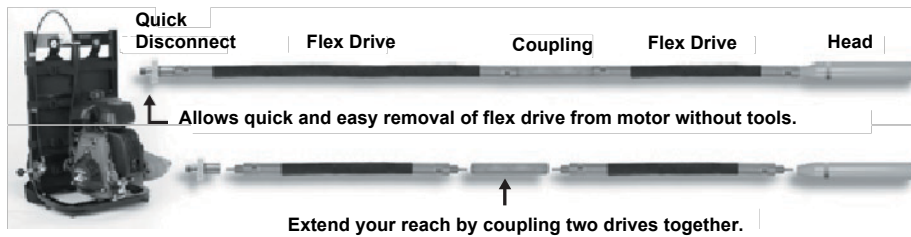
3 Column 3 gives the diameter of the vibrator head needed.

4 Select the power unit desired from column 4. VME units are universal electric motors available in 10 amps (1500), 15 amps (2500), or 20 amps (3000). The VME 3000 and the models ending with an "L" come with a twist lock plug. The motor with the higher amp rating will consolidate low slump concrete more efficiently. VMP 2000 is a 2hp pneumatic motor. VMG 1500HH is a 1.5hp hand held gasoline engine. VMG 2500BP is a 2.5hp backpack mounted gasoline engine.

5 Find the core and casing length desired in section 5. Smart Part Systems with a 7/8" head come with 7/8" diameter flexible drive. All other systems come with a 1-1/16" diameter flexible drive.

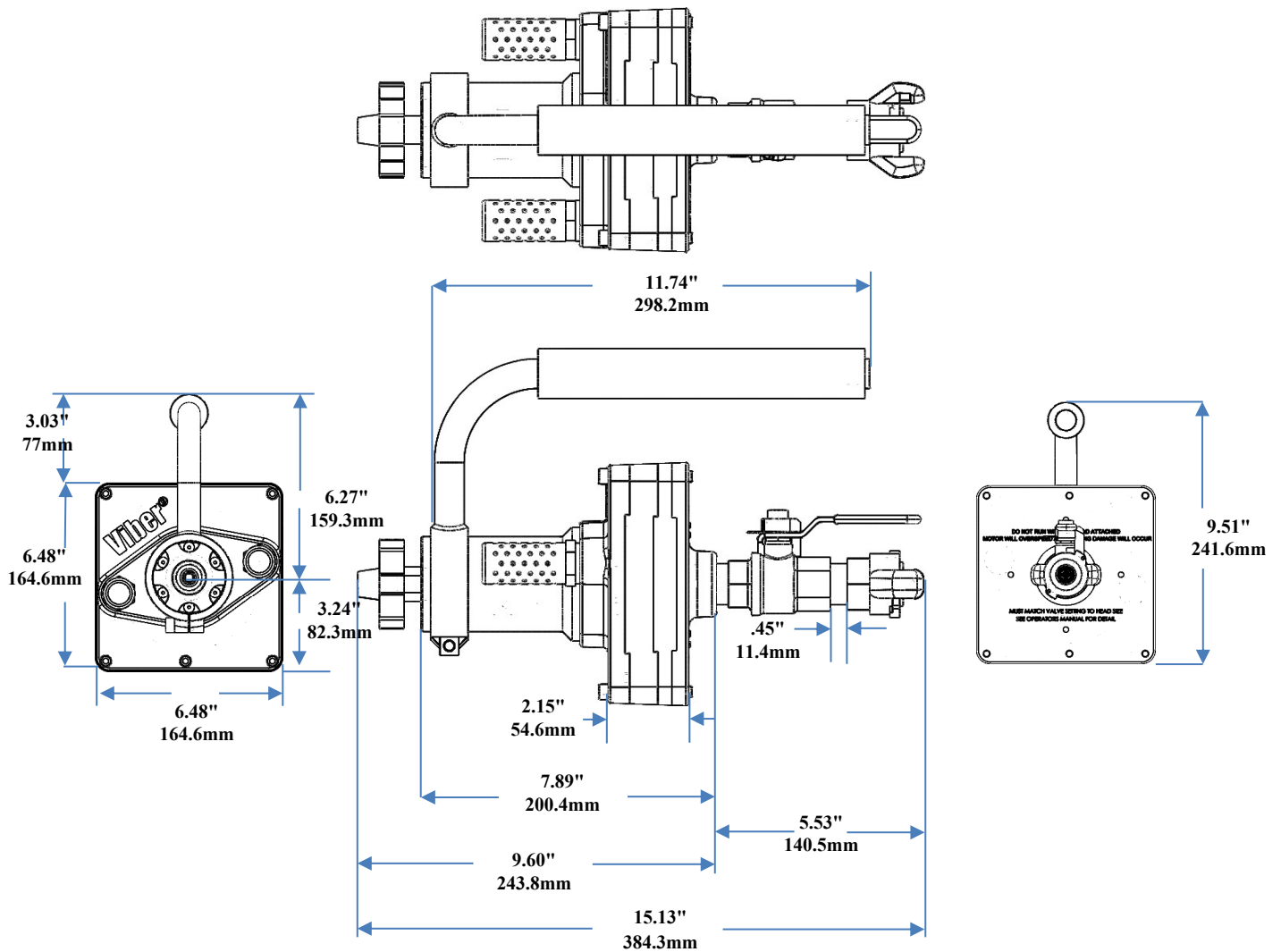
NOTE: 28" AND 35" FLEX DRIVES REQUIRE COUPLING TWO SHORTER DRIVES TOGETH

Viber® REVERSIBLE FLEXIBLE SHAFTS										
NOMINAL SHAFT LENGTH	CORES		CASINGS				COMPLETE FLEX DRIVE ASSEMBLIES			
	CORES	CORE WEIGHT	STANDARD DIAMETER 1-1/16"	CASING WEIGHT	SMALL DIAMETER 7/8"	CASING WEIGHT	STANDARD DIAMETER 1-1/16"	FLEX DRIVE WEIGHT	SMALL DIAMETER 7/8"	FLEX DRIVE WEIGHT
FT	Mode Part #	pounds kg	Mode Part #	pounds kg	Mode Part #	pounds kg	Mode Part #	pounds kg	Mode Part #	pounds kg
	VCR04-0	0.2	VCS17-0	0.8	VCS14-0	1.0	VDR17-0	1.0	VDR14-0	1.2
	93500	0.09	93200	0.36	93220	0.45	93000	0.45	93020	0.54
3	VCR04-03	0.6	VCS17-03	2.	VCS14-03	2.0	VDR17-03	2.7	VDR14-03	2.6
	935003	0.27	932003	0.95	932203	0.9	930003	1.22	930203	1.18
5	VCR04-05	1.0	VCS17-05	4.2	VCS14-05	4.0	VDR17-05	5.2	VDR14-05	5.0
	935005	0.45	932005	1.9	932205	1.8	930005	2.36	930205	2.27
7	VCR04-07	1.4	VCS17-07	6.0	VCS14-07	5.5	VDR17-07	7.4	VDR14-07	6.9
	935007	0.64	932007	2.72	932207	2.49	930007	3.36	930207	3.13
10	VCR04-10	1.8	VCS17-10	8.0	VCS14-10	7.5	VDR17-10	9.8	VDR14-10	9.3
	935010	0.82	932010	3.63	932210	3.40	930010	4.45	930210	4.22
14	VCR04-14	2.8	VCS17-14	11.0	VCS14-14	10.0	VDR17-14	13.8	VDR14-14	12.8
	935014	1.27	932014	4.99	932214	4.54	930014	6.26	930214	5.8
2	VCR04-2	4.2	VCS17-2	16.0	VCS14-2	14.5	VDR17-2	20.2	VDR14-2	18.7
	93502	1.9	93202	7.26	93222	6.58	93002	9.16	93022	8.48

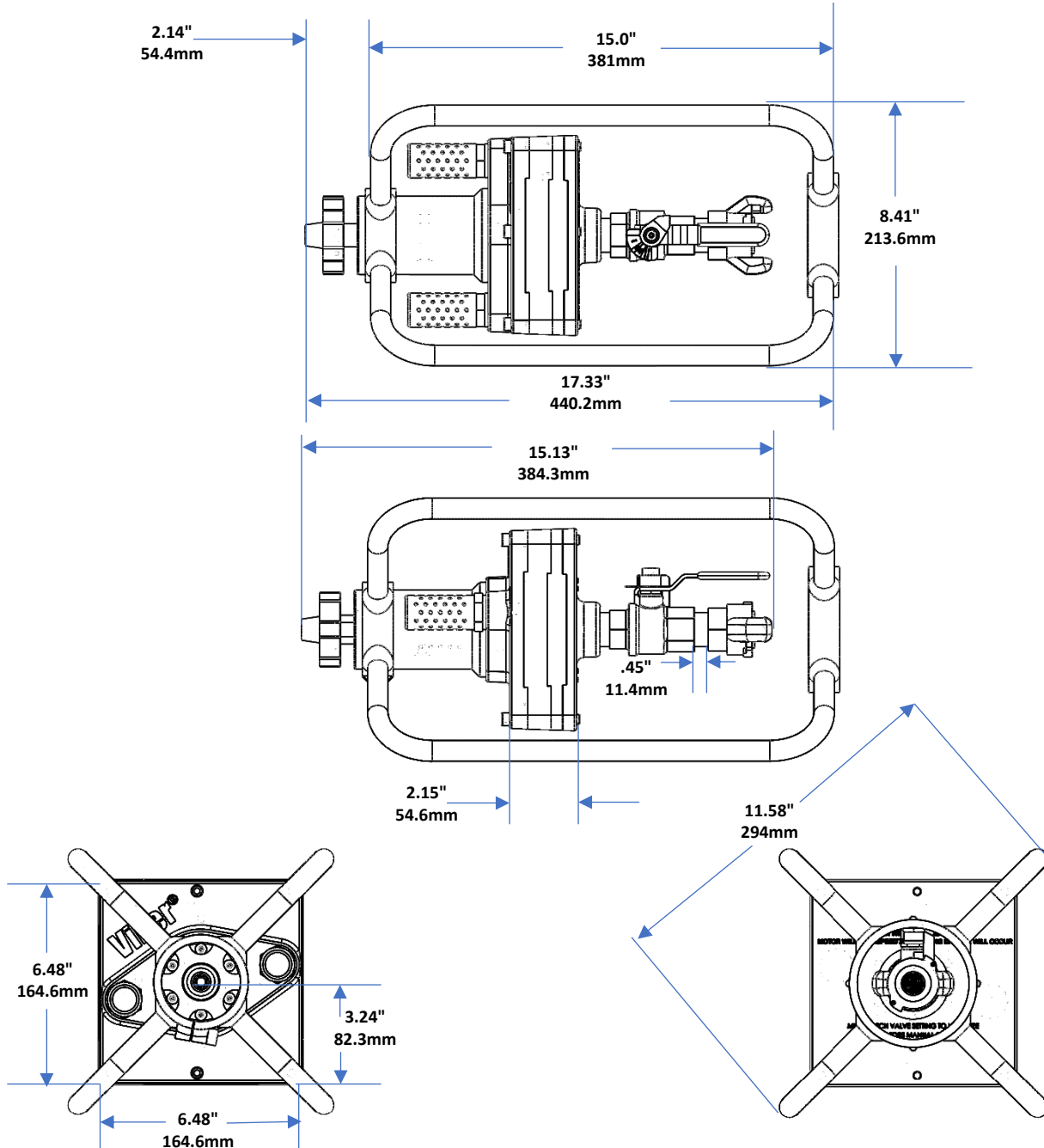


Viber® FLEXIBLE SHAFT ACCESSORIES AND LUBRICANTS		
DESCRIPTION	Mode	pounds
	Part #	kg
STANDARD DRIVE COUPLING	VCP17	1.6
	939017	0.73
STANDARD DRIVE COUPLING	VCP14	0.8
	939014	0.36
QUICK DISCONNECT	VQD17	0.8
	939117	0.36
QUICK DISCONNECT NUT FITTING	VQDN	0.2
	414913	0.09
QUICK DISCONNECT MOTOR FITTING	VQDM	0.2
	414912	0.09
QUICK DISCONNECT DRIVE FITTING	VQDD	0.3
	41491	0.14
SHOULDER STRAP	VSTRP	
	99000	0.45
Viber® CORE GREASE - 1LB	VCG	1.2
	99005	0.54
Viber® CORE GREASE - 5LB	VCG5	0.8
	990055	0.36

**Pneumatic Turbine Concrete Vibrator VMP-Turbo
comes with Handle and Quick Disconnect**



Pneumatic Turbine Concrete Vibrator VMP-Turbo
Comes with Cage and Quick Disconnect



Distributed By:



ChicagoVibratorProducts
Flow and Compaction

Division of CVP Group
 800-842-7284 (P)
 866-247-7538 (F)
 Solutions@ChiVib.com
 www.ChicagoVibrator.com